

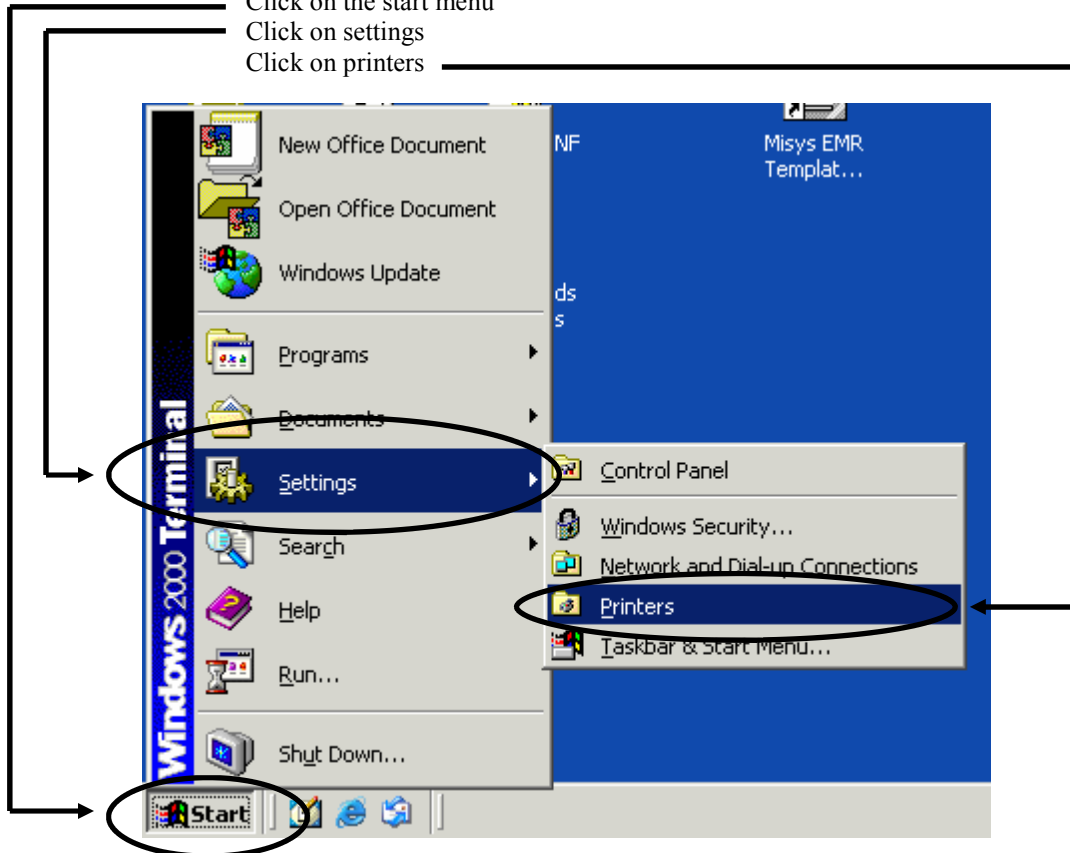
# Setting your Default Printer in Citrix

Once you are logged into Citrix (Misys EMR Desktop)

Click on the start menu

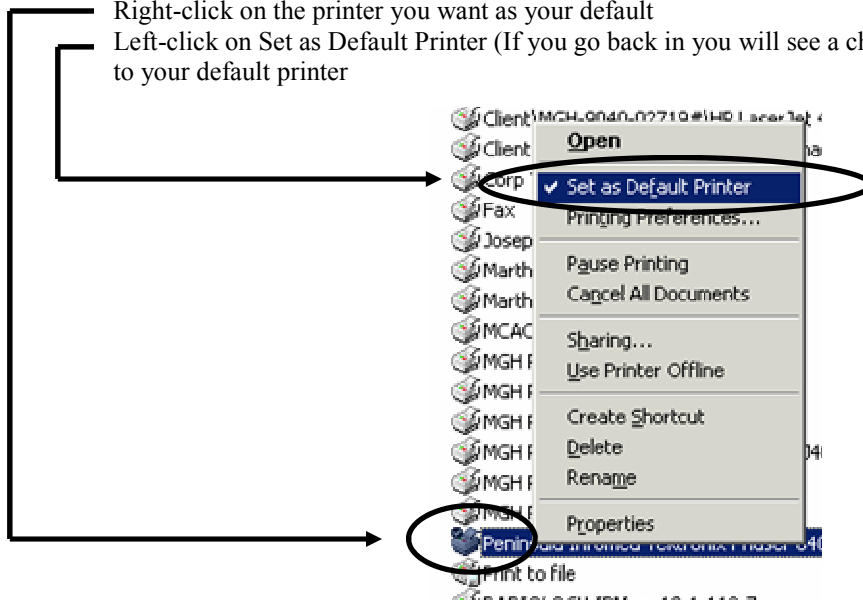
Click on settings

Click on printers



Right-click on the printer you want as your default

Left-click on Set as Default Printer (If you go back in you will see a check mark next to your default printer)



Click the "x" in the upper right hand corner to close the Printer window.